



Crystal Clear Restoration Project

National Forest: Mt. Hood
Ranger Districts: Barlow & Hood River

Legend

Planning Area

Existing Road Status

2 - HIGH CLEARANCE VEHICLES

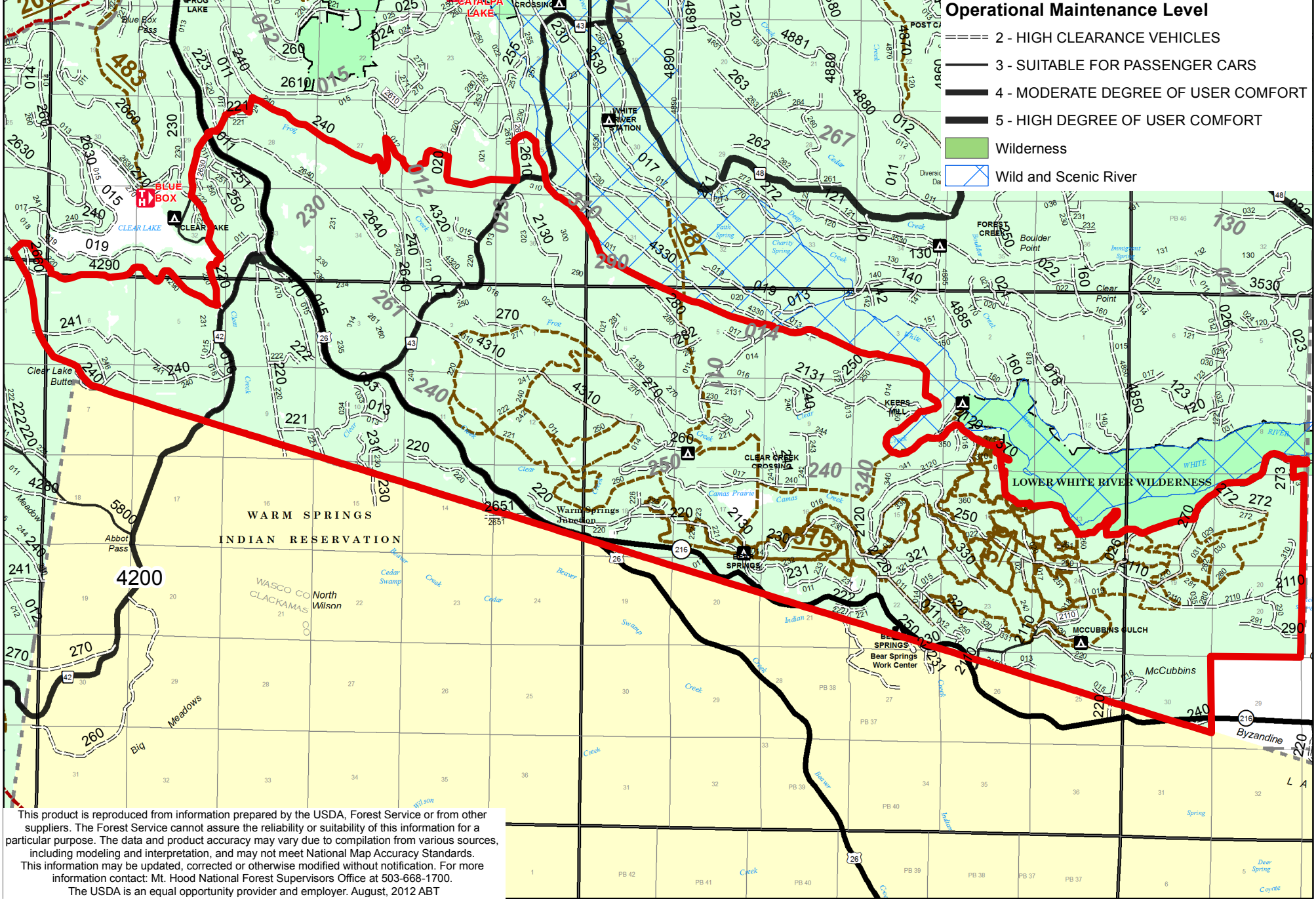
3 - SUITABLE FOR PASSENGER CARS

4 - MODERATE DEGREE OF USER COMFORT

5 - HIGH DEGREE OF USER COMFORT

Wilderness

Wild and Scenic River



This product is reproduced from information prepared by the USDA, Forest Service or from other suppliers. The Forest Service cannot assure the reliability or suitability of this information for a particular purpose. The data and product accuracy may vary due to compilation from various sources, including modeling and interpretation, and may not meet National Map Accuracy Standards. This information may be updated, corrected or otherwise modified without notification. For more information contact: Mt. Hood National Forest Supervisors Office at 503-668-1700. The USDA is an equal opportunity provider and employer. August, 2012 ABT