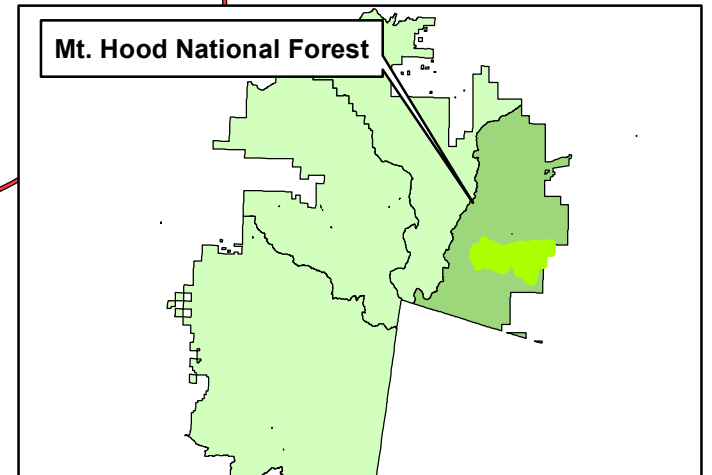
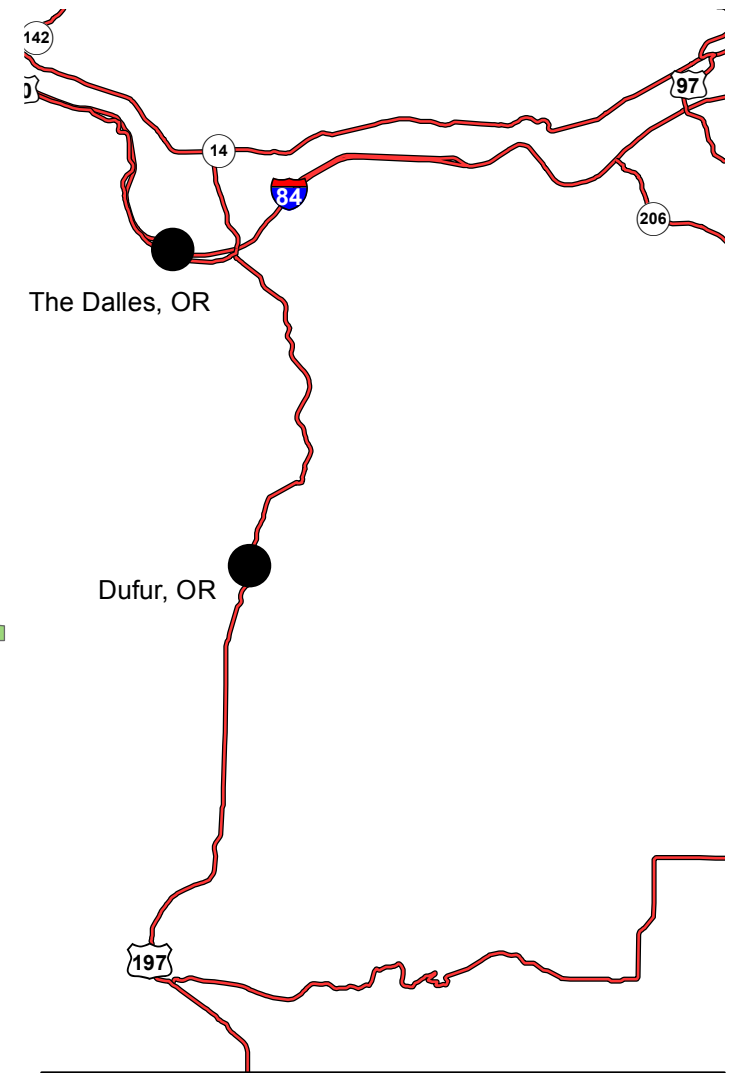
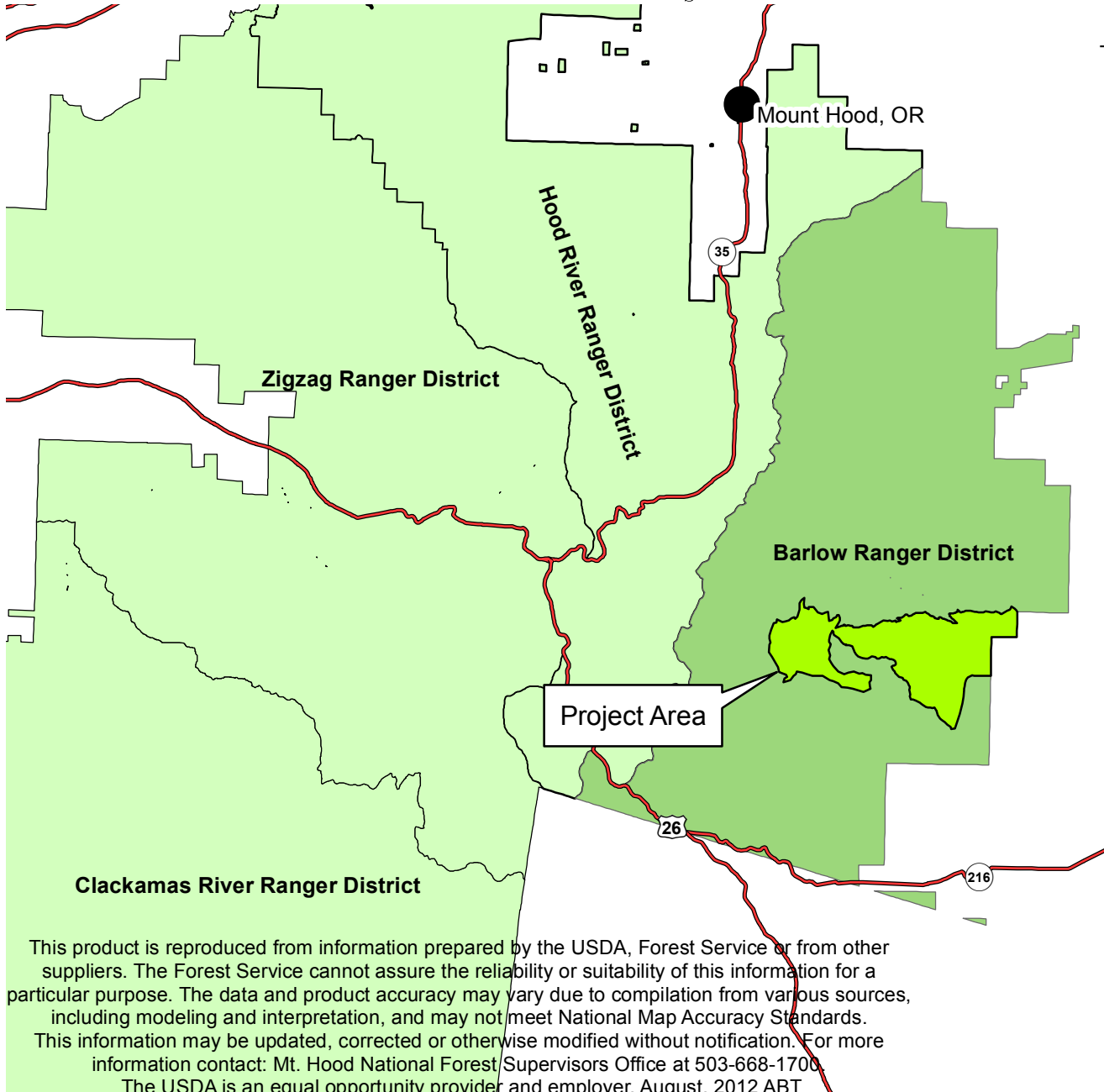
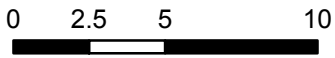




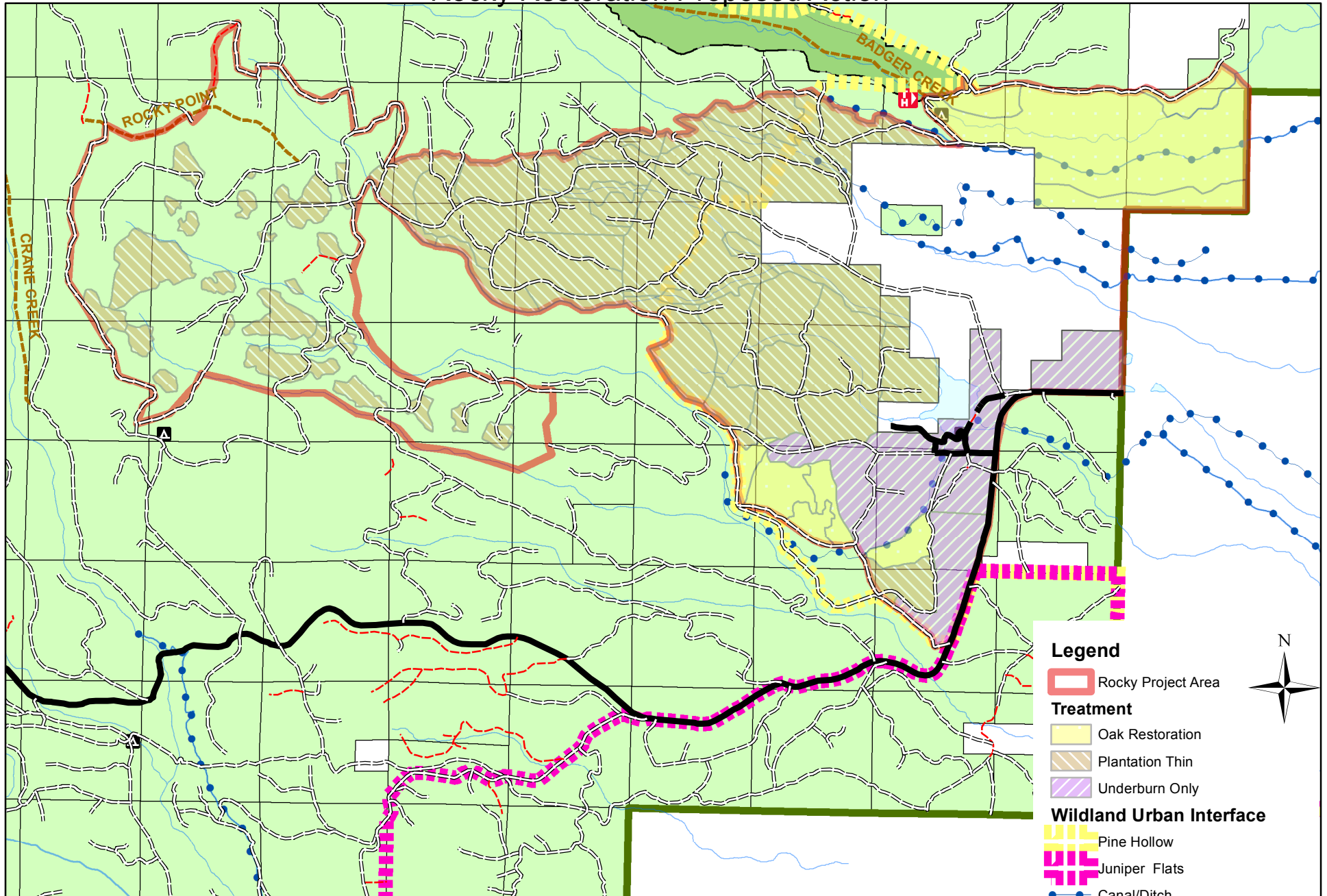
Rocky Restoration Project

National Forest: Mt. Hood
Ranger District: Barlow



This product is reproduced from information prepared by the USDA, Forest Service or from other suppliers. The Forest Service cannot assure the reliability or suitability of this information for a particular purpose. The data and product accuracy may vary due to compilation from various sources, including modeling and interpretation, and may not meet National Map Accuracy Standards. This information may be updated, corrected or otherwise modified without notification. For more information contact: Mt. Hood National Forest Supervisors Office at 503-668-1700. The USDA is an equal opportunity provider and employer. August, 2012 ABT

Rocky Restoration Proposed Action



Legend

- Rocky Project Area
- Treatment**
- Oak Restoration
- Plantation Thin
- Underburn Only
- Wildland Urban Interface**
- Pine Hollow
- Juniper Flats
- Canal/Ditch
- Existing Road Status**
- CLOSED
- HIGH CLEARANCE VEHICLES
- PASSENGER VEHICLE



This product is reproduced from information prepared by the USDA, Forest Service or from other suppliers. The Forest Service cannot assure the reliability or suitability of this information for a particular purpose. The data and product accuracy may vary due to compilation from various sources, including modeling and interpretation, and may not meet National Map Accuracy Standards. This information may be updated, corrected or otherwise modified without notification. For more information contact: Mt. Hood National Forest Supervisors Office at 503-668-1700. The USDA is an equal opportunity provider and employer. August, 2012 ABT

