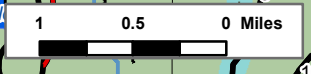
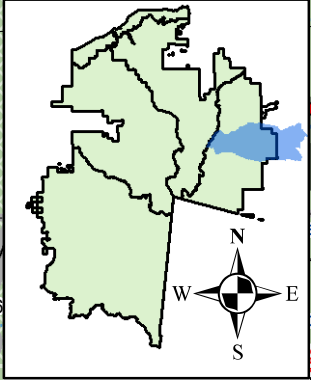
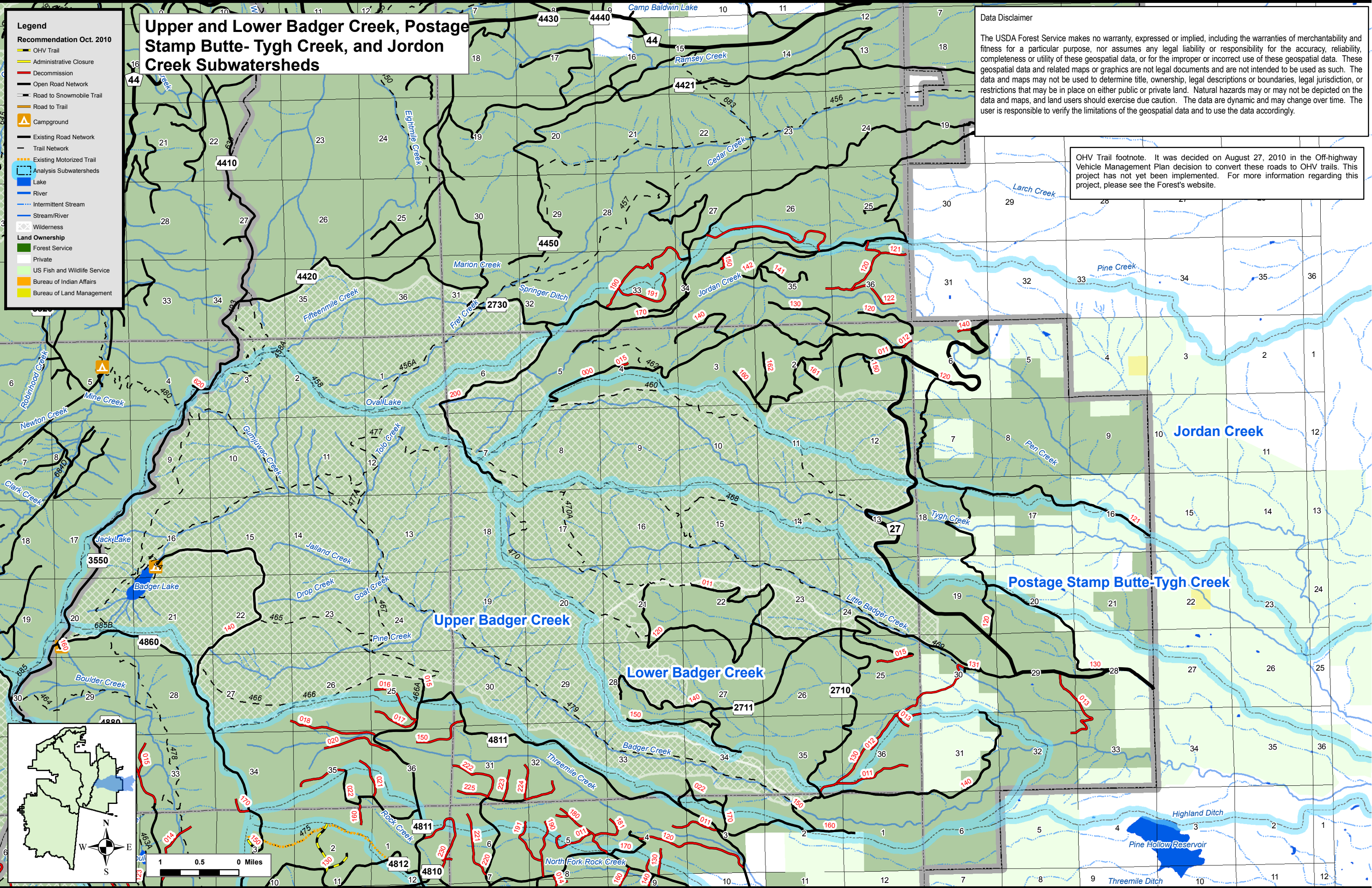


Upper and Lower Badger Creek, Postage Stamp Butte- Tygh Creek, and Jordon Creek Subwatersheds

Data Disclaimer
 The USDA Forest Service makes no warranty, expressed or implied, including the warranties of merchantability and fitness for a particular purpose, nor assumes any legal liability or responsibility for the accuracy, reliability, completeness or utility of these geospatial data, or for the improper or incorrect use of these geospatial data. These geospatial data and related maps or graphics are not legal documents and are not intended to be used as such. The data and maps may not be used to determine title, ownership, legal descriptions or boundaries, legal jurisdiction, or restrictions that may be in place on either public or private land. Natural hazards may or may not be depicted on the data and maps, and land users should exercise due caution. The data are dynamic and may change over time. The user is responsible to verify the limitations of the geospatial data and to use the data accordingly.

- Legend**
- Recommendation Oct. 2010**
- OHV Trail
 - Administrative Closure
 - Decommission
 - Open Road Network
 - Road to Snowmobile Trail
 - Road to Trail
 - Campground
 - Existing Road Network
 - Trail Network
 - Existing Motorized Trail
 - Analysis Subwatersheds
 - Lake
 - River
 - Intermittent Stream
 - Stream/River
 - Wilderness
- Land Ownership**
- Forest Service
 - Private
 - US Fish and Wildlife Service
 - Bureau of Indian Affairs
 - Bureau of Land Management

OHV Trail footnote. It was decided on August 27, 2010 in the Off-highway Vehicle Management Plan decision to convert these roads to OHV trails. This project has not yet been implemented. For more information regarding this project, please see the Forest's website.



Upper Badger Creek

Lower Badger Creek

Postage Stamp Butte-Tygh Creek

Jordan Creek